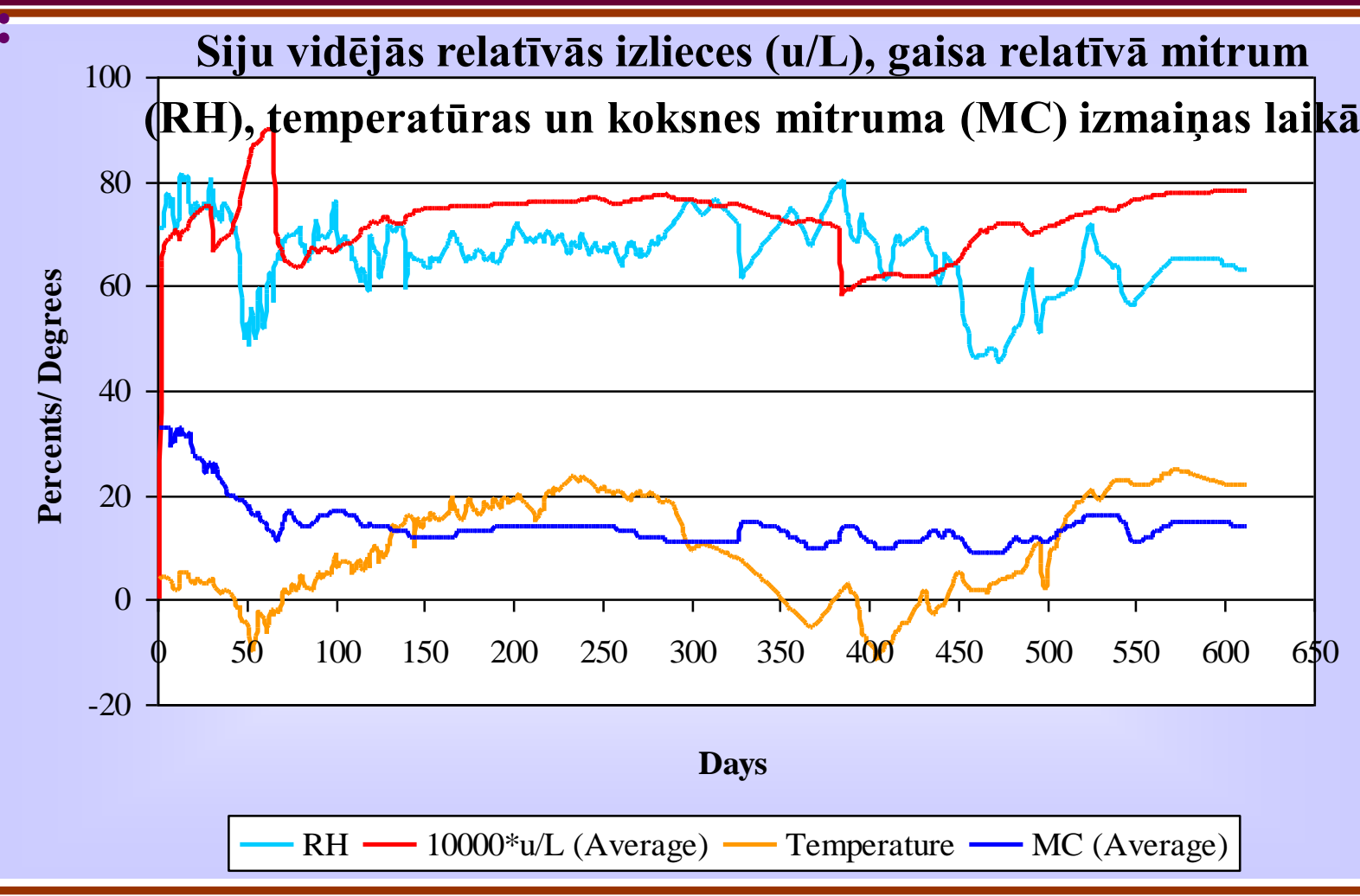
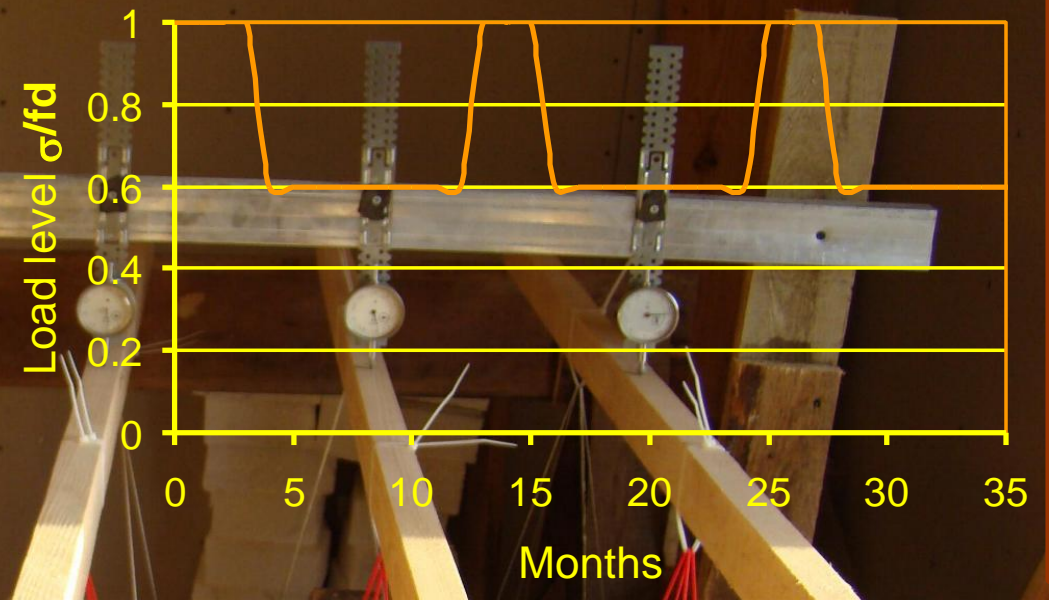


# Koka būvelementu deformāciju attīstība ilgstošā slodījumā

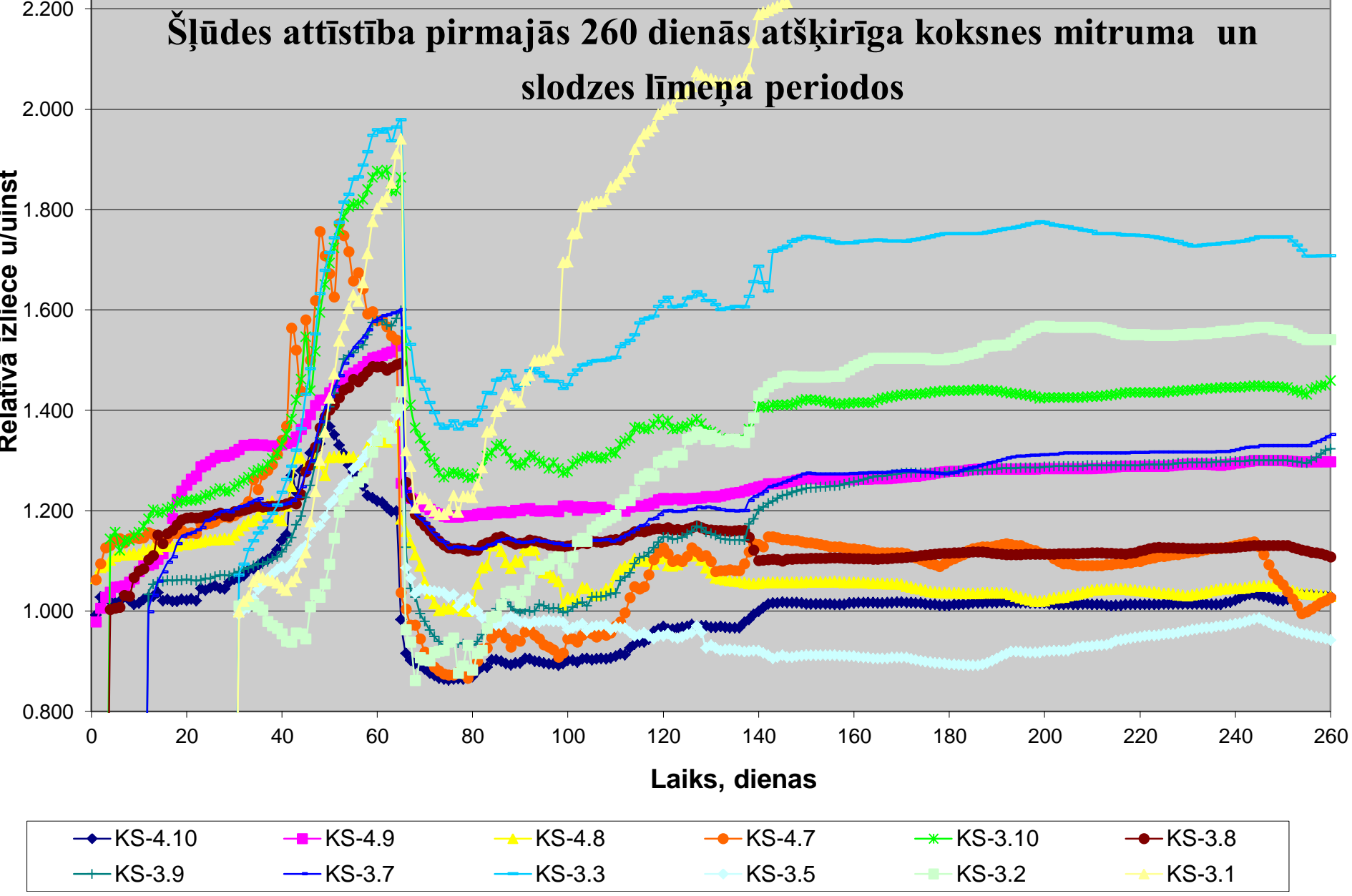
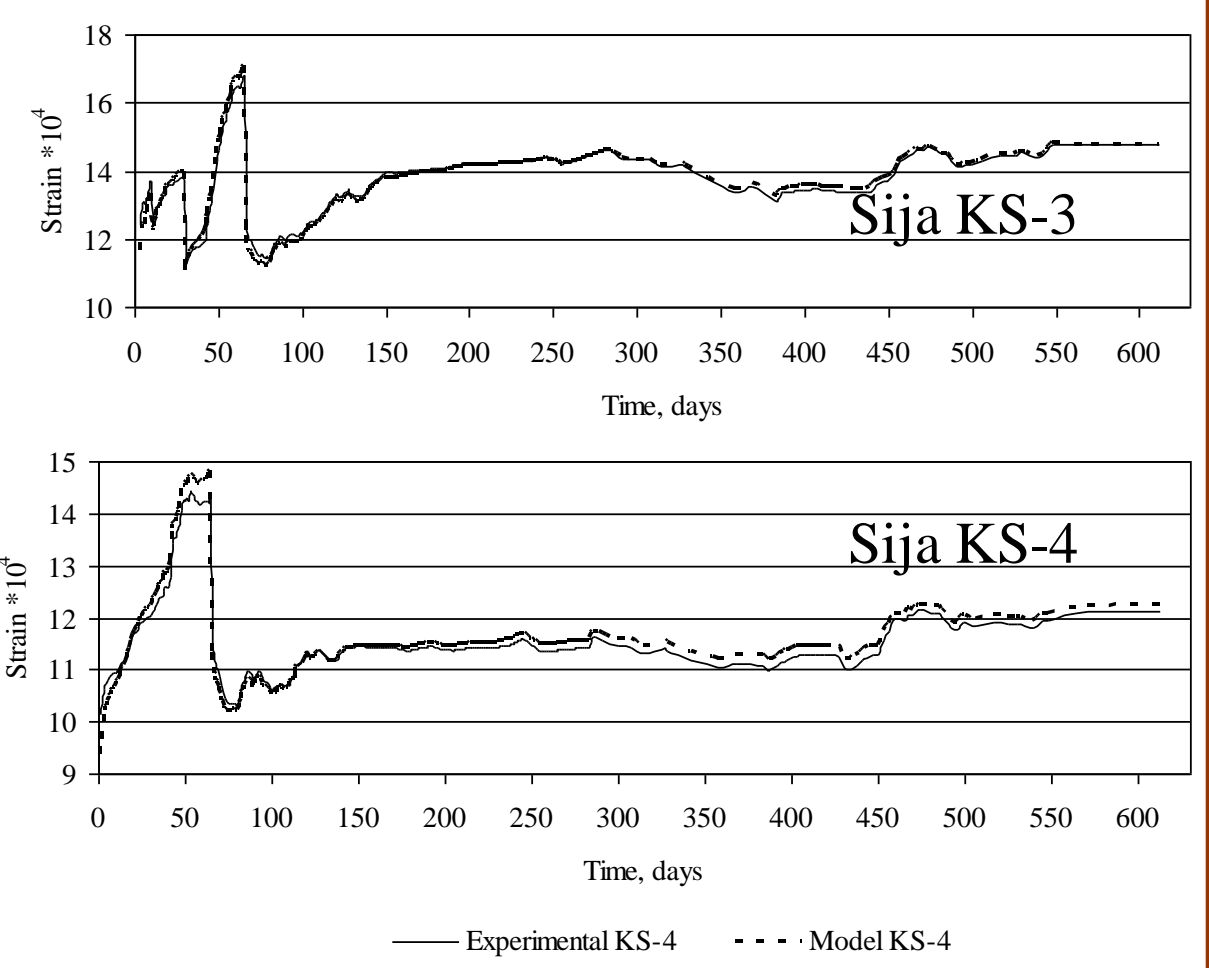
Deformāciju pieaugums laikā (šļūde): ar kādu matemātisko modeli to aprakstīt, kuri faktori ir ietekmīgākie, - tie ir uzdevumi, ko risina doktorants **Aivars Brokāns** savā promocijas darbā prof. L.Ozolas vadībā.



Testa sijas un slodšanas režīms



Stiepto šķiedru relatīvo deformāciju attīstība laikā: teorētiskā prognoze un eksperimentālie rezultāti







ISEC | INTERNATIONAL STRUCTURAL ENGINEERING & CONSTRUCTION CONFERENCE

The Seventh International Structural Engineering and Construction Conference  
*New Developments in Structural Engineering and Construction*  
Honolulu, June 18 - 23, 2013

## RELATIONSHIPS IN CREEP DEVELOPMENT OF TIMBER BEAMS UNDER NATURAL ENVIRONMENTAL CONDITIONS

**Lilita Ozola,**  
Asoc. Prof., Dr.Sc.ing.  
and  
**Aivars Brokāns,**  
MSc.ing., Doctoral Student

*Department of Structural Engineering  
Latvia University of Agriculture*

Department of Structural Engineering  
Faculty of Rural Engineering  
19-707 Akademijas Str  
Jelgava, LV-3001, LATVIA  
E-mail : lit1oak@llu.lv  
Lilita.Ozola@llu.lv



18th IABSE Congress, Seoul, 2012  
Innovative Infrastructures - Toward Human Urbanism

## Study for improvements in design codes of timber structures regarding developments in time

Lilita OZOLA, Associate Professor, Dr.Sc.ing.  
Aivars BROKANS, MSc.ing., Doctoral Student  
Department of Structural Engineering,  
Latvia University of Agriculture  
City: Jelgava, Country: LATVIA

Koka siju šļūdes pētījumi nekontrolētos vides mitruma un temperatūras apstākļos ir būvzinātnes doktoranta **Aivara Brokāna** promocijas darba pamatā. Tēma ir nozīmīga būvprojektēšanai.

Brokans A. The effect of timber properties on the behaviour of bending elements under loading/ Research for Rural Development, Vol 2, Jelgava, 2013, P. 128-134 (SCOPUS).

Brokans A. Research of 'duration of load' effects in timber elements in bending/Research for rural development, Vol 2, Jelgava, 2012, P. 98-104 (SCOPUS)

Ozola L., Brokans A. Development of mathematical model proposed for prediction of final deformation in bending of timber beams. In: Report Book of IABSE Symposium MADRID 2014, Madrid, September 3-5, 2014: Engineering for Progress, Nature and People. Publisher: IABSE C/o ETH Hönggerberg CH-8093 Zurich, 2014. Pp. 1650-1657 (Electronic resource). (SCOPUS).

Brokans A., Ozola L. Behaviour of creep of timber beams under natural environmental conditions. In: WIT Transactions on the Built Environment, Volume 137, 2014, Pages 479-489. International Conference on High Performance and Optimum Design of Structures and Materials, HPSM/OPTI 2014; Ostend; Belgium; 9 June 2014 through 11 June 2014; (SCOPUS).

Ozola L., Brokans A. Relationships in Creep Development of Timber Beams Under Natural Environmental Conditions. In: New Developments in Structural Engineering and Construction. Editors: Siamak Yazdani and Amarjit Singh. Research Publishing, Singapore, 2013.- Vol I, pp. 773-777. Cited by SCOPUS.

Brokans A., Ozola L. Experimental investigation of behaviour of timber beams under natural environmental conditions.- Conference Proceedings SB13 Oulu. Sustainable Procurement in Urban Regeneration and Renovation. May 22-24, 2013, Oulu, Finland, 2013, Pp. 275-282.

Ozola L., Brokans A. Study for improvements in design codes of timber structures regarding developments in time.- Proceedings of the 18TH Congress Of IABSE, Seoul, September 19-21, 2012: Innovative Infrastructures - Toward Human Urbanism. Full Text file A-335.pdf

Study for improvements in design codes of timber structures regarding developments in time

ERAF IEGULDĪJUMS TAVĀ NĀKOTNĒ  
Contract Nr. 2010/0198/2DP/2.1.1.2.0/10/APIA/VIAA/02

